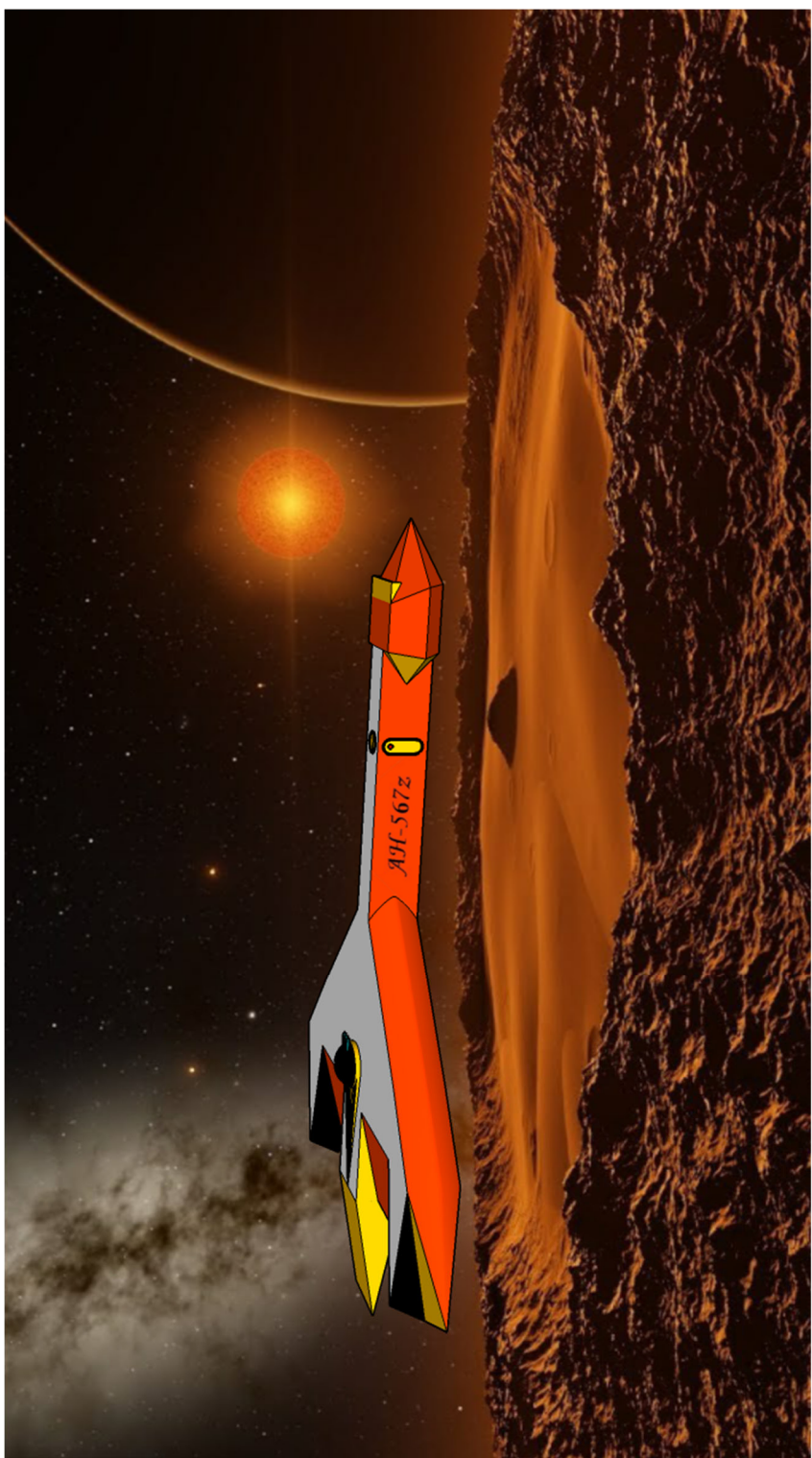


Admiral's Guide to the Kentron Subsector

---

# Stellar Empires

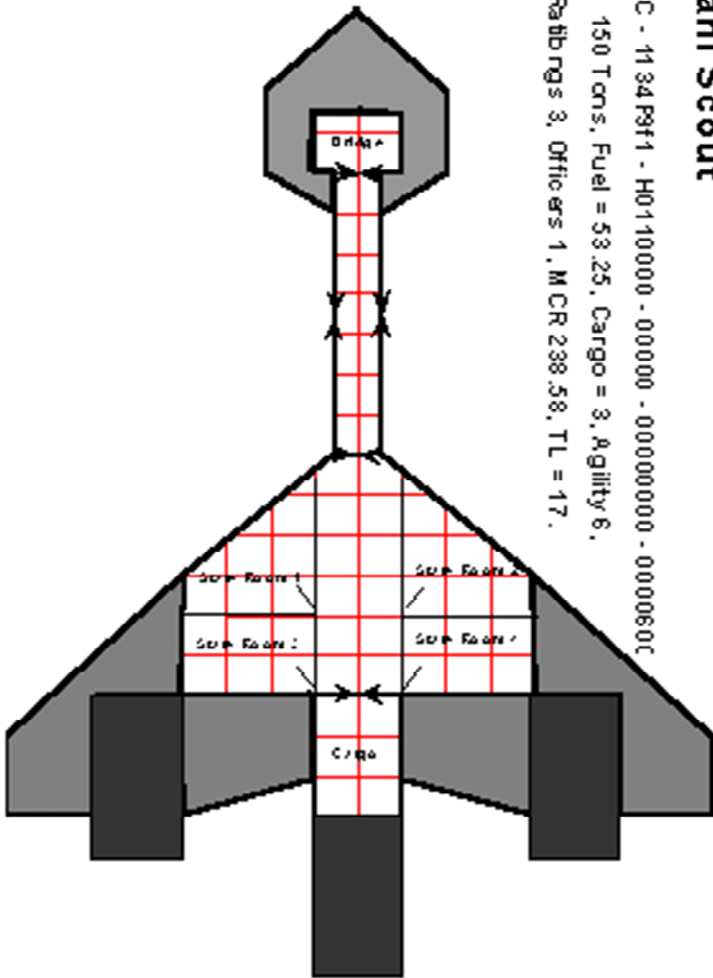


# AN ADMIRAL'S GUIDE TO THE KENTRON SUBSECTOR

A fanzine supplement for **Traveller** in all it's forms.  
By William T. Richards

## Talani Scout

SC - 11 34 P9F1 - H0110000 - 000000 - 000000000 - 0000060C  
150 Tons, Fuel = 53.25, Cargo = 3, Agility 6,  
Ratbrngs 3, Officers 1, MCR 238.58, TL = 17.



The Weekend Traveller Press

The game **Traveller** in all forms is owned by Far Future Enterprises, copyright 1977-2006 Far Future Enterprises. **Traveller** is a registered trademark of Far Future Enterprises. Far Future Enterprises permits websites and fanzines for this game, provided it contains this notice, that Far Future Enterprises is notified, and subject to a withdrawal of permission on a 90 days notice. The contents of this fanzine are for personal, non-commercial use only. Any use of Far Future Enterprise's copyrighted material or trademarks anywhere in this fanzine should not be viewed as a challenge to those copyrights or trademarks.

### Credits

Design and Development: William T. Richards.

Additional Help and original players: Kenneth L. Dudley,  
Hugh D.R. Evans,  
J.Christopher Horner,  
Steven K. Pritchard,  
Patrick N. Simpson.

Illustrations: William T. Richards.

Permission is granted to print this document for personal use

### System Data for Leven/Kentron (1619):

-	Bleezy	G6 IV	Primary
0	Margg	Y200000-0	
1	Izod	Y200000-0	
2	Edity	YS00000-0	
3	Telve	F670167-9	De Ni
3	13 Perp	Y210000-0	
4	Bros	Y410000-0	
4	5 Edgar	YS00000-0	
4.6	Allen	F859166-9	Ni
5	Frog	Small GG	
5	6 Cer	F441568-A	Ni
5	13 Leven	B7646DA-A	Ag Ni
5	60 Jrbat	F332166-9	Ni Po

Long before the Talani Empire fell apart, Leven had built a small defense fleet to protect itself from pirates and provide customs inspections. Despite having the first home built fleet in the subsector they knew that the strength of the Kentron fleet could easily overwhelm them. Once King Gerald realized that Kentron was not going to be stopped by any opposing empire, he sent an emissary to Kentron to discuss joining forces. As many people within the Kentron subsector are members of a religious cult based on Leven, Von-Kentron accepted the Levenites proposal partly to levy a tax on the pilgrimages to Leven, but also to gain control over the powerful church. Also by accepting the Levenites into the empire and not conquering them, Kentron has gained a level of legitimacy to rule from the church's followers. It remains to be seen if he can successfully maintain this legitimacy. The gas giant Frog is well defended and an invader will have to first secure Leven itself, before making the space around Frog safe for refueling.

### "Nebulas play hell with solar-powered starships"

-Lord Randal Walsingham  
Novalan naval architect

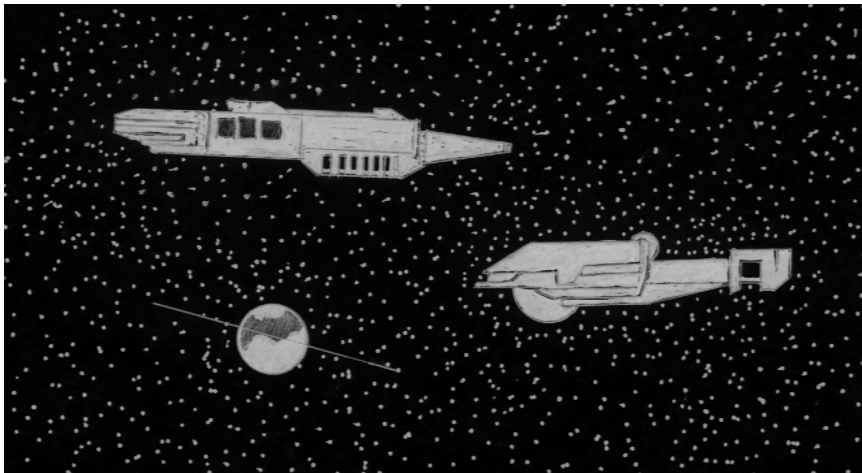
**"Keep your weapon clean and batteries dry, let the computer aim for you, and always, always kill the officers first!"**

-General Vilhelm Sharp  
Kentron Empire Marine commander

## System Data for Bongo/Kentron (1616):

-	Base	M6 V	Primary
1	Symbol	Y100000-0	
2	Stick	Y100000-0	
3	Snare	Y603000-0	
4	Steel	Y703000-0	
5	Kettle	F942000-0	
6	Drummer's Belt	Y000000-0	
7	Timpani	Large GG	
7	4 Major	Y3A3000-0	
7	7 Bongo	B500956-A	Hi Na Va
7	9 Ear	YS00000-0	

Bongo is also one of the few well-defended non-home world systems in the subsector. The main world of Bongo orbits the only gas giant in the system, but is unable to provide a decent base for defense as it has no atmosphere and is vulnerable to particle accelerator weapons. Thus Kentron has placed several meson gun sites on the moon Major to better defend the gas giant. From here the defenders can harass any fleet attempting to setup a base in the system.



System Data for Igod/Kentron (1615):

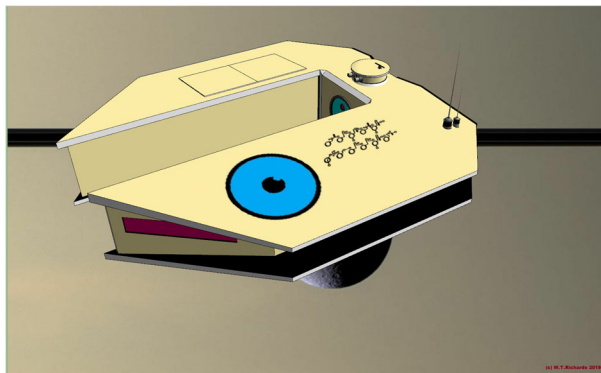
-	Eek	K6 II	Primary
2	Speck	Y400000-0	
3	Selas	Y945000-0	
3	7 Darz	Y510000-0	
3	10 Yebo	Y400000-0	
5	Ethan	Y810000-0	
5	6 Eraw	Y210000-0	
5	7 Liam	YS00000-0	
6	liw	Y721000-0	
7		Y000000-0	
9	Veser	Large GG	
9	3	Ring	
9	5 Syad	Y215000-0	
9	6 Nalc	Y306000-0	
9	7 Loiv	YS02000-0	
9	8 Ragat	YS03000-0	
9	10 Gorp	Y101000-0	
9	60 Igod	D324533-8	Ni
9	225 Nised	Y595433-7	Ni Prison Colony
10	Dunsel	Large GG	
10	1	Ring	
10	6 Redael	Y520000-0	
10	7 Gual	Y434000-0	
10	8 Korgath	Y846160-8	Ni
10	9 Grom	Y100000-0	
10	60 Dentarg	Y200000-0	
11	Kargath	Small GG	
11	5 Auchindoun	Y320000-0	
11	10 Zeth'kur	YS00000-0	
12	Khadgar	Small GG	
12	6 Alleria	YS00000-0	
12	7 Danath	Y200000-0	
12	50 Turalyon	Y310000-0	
13	Kurdran	Y420000-0	
14	Lothor	Y503000-0	

The Igod system is well within the Kentron Empire. As such the system is of little use, unless a war is going badly for the forces of Kentron. Even so the four gas giants will divide up the resources of either side of the battle. The defender is well advised to only defend Veser as it is the most important gas giant in this system and because Igod orbits it. Also defending the others would needlessly tie up valuable resources. Note: Nised is a prison colony for Kentron.

## System Data for Bann/Kentron (1612):

-	Gondolin	M3 V	Primary
0	Pelucidor	Large GG	
0	2	Ring	
0	7 Ninel	F224163-8	Ni
0	8 Turin	F643162-8	Ni Po
0	35 Brandir	F352161-8	Ni Po
0	45 Bann	C431262-9	N Lo Ni Po
1	Dorlas	Large GG	
1	2	Ring	
1	6 Nen Girth	F653162-8	Ni Po
1	7 Halath	Y100000-0	
1	8 Gurthang	YS00000-0	
1	9 Gwindor	Y425000-0	
1	11 Beleg	Y731000-0	
1	35 Angband	Y200000-0	
1	55 Valinor	F882164-9	N Ni
2	Thingol	Small GG	
2	1	Ring	
2	40 Talath	Y100000-0	
3		Y000000-0	
4		Y000000-0	

Bann fell quickly to the fleets of Kentron once they arrived. However, the Kentron governor has used the taxes collected from this system to rebuild the infrastructure that was destroyed. Now all the taxes are being used to upgrade the starport and to increase the defensive capability of the system as a whole. It seems that Kentron may be planning to move into other subsectors from here. The naval base on Valinor virtually denies the gas giant Nen Girth from invading fleets. It is reported that several large meson guns have been delivered here and installed in deep underground casemates. If this is so then Thingol may be a better target for getting into the system and setting up an advance base to spearhead attacks on the inner system.



## Table of Contents

Introduction	6
Standards and Assumptions	6
Allegiance Codes	6
History	7
Maps of the Subsector	8
L'Rar 0911	12
Kentron 0918	12
Vykn 0920	13
Senin 1011	14
Dakkas 1012	14
Aite 1014	15
Dublo 1015	15
Gemini 1111	16
Novala 1112	17
Tahiti 1113	18
Mach One 1117	18
Deuce 1118	19
Zeon 1211	19
Eas 1212	20
Odie 1214	21
ID 1215	21
Ceribus 1217	22
Tygr 1219	23
Opecia 1314	23
Skyler 1316	24
Daria 1412	25
Phyton 1417	25
Sixth 1418	26
Kraller 1511	29
Seve 1514	30
Ack 1516	30
Wolf 1518	31
Bann 1612	32
Igod 1615	33
Bongo 1616	34
Leven 1619	35

## Introduction

This booklet presents an in-depth look at a specific subsector of the Talani Empire, lying far from the Imperium. It contains data on each of the systems in this subsector, identifying all significant bodies within the systems. Included are briefings that should provide a good overview to any fleet admiral invading or defending the systems.

### Standards and Assumptions

The Kentron subsector is a small portion of the fictional universe that has been extensively described in the many other **Traveller** products produced in the past twenty plus years. It is assumed that the player and referee have access to some of these materials to include the original **Traveller (CT)**, **Book5: High Guard, Trillion-Credit Squadron**, and **Book6: Scouts**. Also helpful are **Mark Miller's Traveller (T4)**, **Imperial Squadrons**, **Pocket Empires**, **GURPS: Traveller (GT)**, **GT: Far Trader**, and **GT: First In**. In addition there will be future versions of **Traveller**, this supplement to the **Traveller** universe should be compatible with those versions, as well.

### Dates

All dates herein correspond to the Kentron Calendar. Dates are centered upon the Kentron year zero. Years preceded by a minus sign are before that date; years without a sign or preceded by a plus sign are after that date. Each year consists of 365 days, numbered from 1 to 365. The full date is expressed as DDD - YYYY. For example, 025-0050 is the 25<sup>th</sup> day of the 50<sup>th</sup> year. The current year is 65.

### WORLD DATA

World listings are presented in the format described in the basic **Traveller** rules and **Book6: Scouts**. It is assumed the reader knows this format or has access to the rules so he can interpret them.

### Allegiance Codes

The following codes are used to indicate which empire controls a system.

Code	Empire Name
Kn	Kentron Empire
No	Novala Enterprises
Op	Opecian Empire
Na	Non-Allied

### System Data for Wolf/Kentron (1518):

-	Richards	B6 V	Primary
3	Shatzer	YS00000-0	
4	Lewellen	Y100000-0	
5	Pollock	Y742000-0	
5	13 Kerns	Y231000-0	
5	16 Snyder	YS00000-0	
6	Noel	Y860000-0	
6	9 Curling	Y421000-0	
6	15 Fay	Y511000-0	
7	Chainey	Y300000-0	
7	5 Cannon	YS00000-0	
8	Rupert	Y960000-0	
8	3 Mallow	YS00000-0	
8	7 Ziller	Y440000-0	
8	10 Ashe	Y550000-0	
9	Gottschalk	Large GG	
9	2	Ring	
9	4	Ring	
9	7 Ward	Y732000-0	
9	8 Wolf	C592565-6	Ni
9	10 Durham	Y211000-0	
9	12 Beaty	Y436000-0	
9	13 Watkins	Y524000-0	
9	14 Keefer	Y561000-0	
9	19 Chyco	Y947000-0	
10	Buskerk	Small GG	
10	3	Ring	
10	5 Baker	YS00000-0	
10	7 Thrasher	Y342000-0	
10	10 Ryan	YS00000-0	
10	15 Pepple	Y214000-0	
11.2	Oliphant	Y344000-0	

The inner planets of the Wolf system are unimportant to its defense. However, an invading force could setup a listening post on Thrasher, Oliphant or Rupert and provide intelligence to the invading fleet attacking the Gottschalk moons.



## System Data for Seve/Kentron (1516):

-	Christine	G1 V	Primary
0	Catharine	Y300000-0	
1	Richard	Y560000-0	
2	Casey	YAA0000-0	
2	3 Cara	Y460000-0	
2	7 Daniel	Y200000-0	
2	40 Patrick	Y110000-0	
3	Seve	D240234-4	De Lo Ni Po
4	Hayden	Y100000-0	
4	5 Jacob	YS00000-0	
5	Rachel	Y563000-0	
11	Julie	DM	Secondary
0	Holly	Y503000-0	
0	11 Jeanette	Y100000-0	
1	Gail	Y640000-0	
2	Clarence	Y853000-0	
2	9 Mark	Y321000-0	
3	Wyatt	Y633000-0	

This system's lack of gas giants makes its use as a base of limited value. However, the many planets with surface water should not be overlooked. Any tanker with several support craft can provide small fleets with limited amounts of fuel. It is reported that pirates once operated from this system in this manner.

## System Data for Ack/Kentron (1514):

-	Opus	M2 V	Primary
0.8	Ack	X553454-0	Ni Po
2	Wendell	Small GG	
2	2	Ring	
2	3	Ring	
2	6 Banana	Y201000-0	
2	7 Bill	Y200000-0	
2	9 Dallas	YS00000-0	
2	12 Binkley	YS00000-0	
3	Bedfellow	Large GG	
3	7 Milo	Y207000-0	
3	20 Cutter	Y318000-0	
3	45 Portnoy	Y200000-0	
3.9	Meadow	Y723000-0	

Ack is a mostly unimportant system that is completely undefended by a permanent base. The Kentron Empire has yet to spend money on this system for defense.

## History

With the collapse of the Talani Empire, a power vacuum was created within its borders. Among the first to make a grab for stellar power in the outlying territory was the dictator Maxwell Von-Kentron. Von-Kentron quickly took control of his home planet's government and renamed the planet after himself. He then started a crash program building a fleet to both protect his home planet and project his power across the sector.

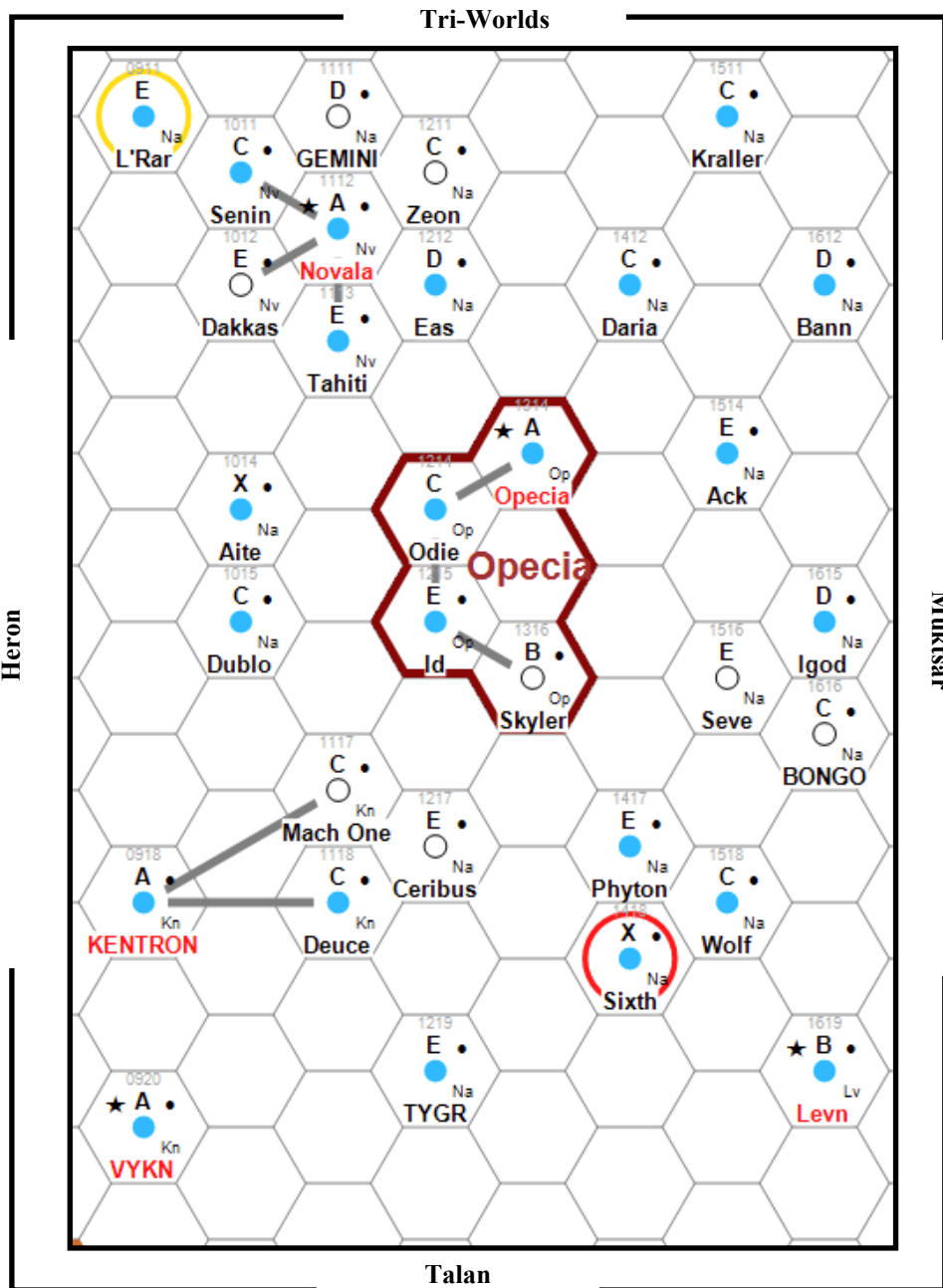
However, Von-Kentron was not the only ruler to seize the moment and prepare for war. Jonathan 'Flipper' Hornback, already the leader of his world and recently returned from the failed Talani Imperial Senate, delivered the secret of the jump drive and other technologies stolen from the Talani databases. The jump drive was a secret that Opecia had yet to figure out for themselves and sorely needed if they were to control their destiny. Armed with the technology and a large population, Hornback also started a crash construction program to build a massive fleet in an attempt to seize nearby worlds and more technology.

Meanwhile the CEO of Novala Enterprises, Stephan Abdullah Prevans believed that his corporation was the only entity able to protect the rest of the Novala system from the Kentron and Opecian warmongers. He staged a *coup d'état* and then removed all the corrupted government officials that had caused so much suffering on the planet. He also took steps to confederate nearby systems and build a fleet. Not having the materials or experience in building large battle fleets, Prevans and the people of Novala did the best they could with the time they had. In the end however, they were left to fight a war with the few ships the old government had left them, and those were woefully inadequate...

By the year 15 each of the players in the then Vidian subsector, were poised for action. It only took a speech from an ill-advised Novalan corporate VP to anger Von-Kentron and start a war. The war only lasted two years but quickly divided the subsector among the three major powers, and forged alliances that would last for over 50 years.

The following two maps will help you to understand how the subsector was changed and affected by the First Kentron War. By studying the following maps the casual observer will realize that Jump-2 is required to move about with out much difficulty. This was the initial problem encountered by the Opecian Empire who had to develop large tanker ships just to maneuver through the subsector. In all the briefings it will be assumed that attacking fleets are Jump-2 capable.

## The Subsector as of 15



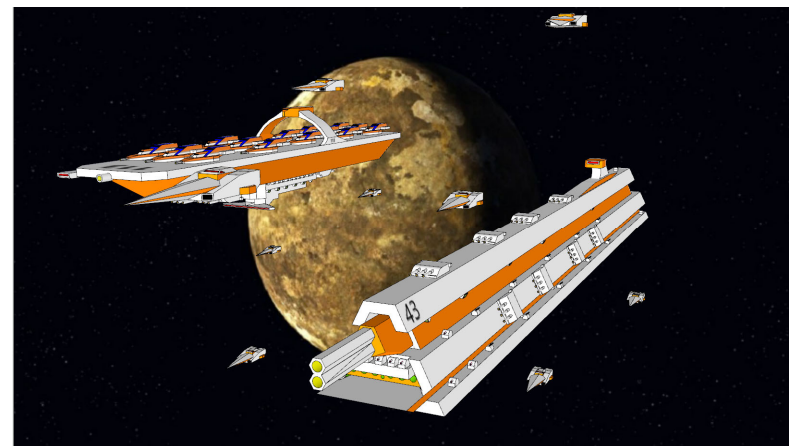
## System Data for Kraller/Kentron (1511):

-	Eru	F7 V	Primary
0	Valar	YS00000-0	
1	Maiar	YS00000-0	
2	Noldor	Y100000-0	
3	Melian	Y450000-0	
4	Kraller	C78588A-7	Ri
5	Esgalduin	Small GG	
5	5 Celegorm	Y456000-0	
5	6 Aros	Y402000-0	
5	7 Celon	Y413000-0	
5	10 Elmoth	Y342000-0	
5	65 Aredhel	Y735000-0	

## System Data for Kraller/Kentron (1511): Far Companion

-	Feanor	DM	Secondary at 4000 AU
0	Felagund	YS00000-0	
1	Arda	Y214000-0	
2	Sauron	Y754000-0	
2	3	Ring	

This double system is one of two systems seemingly targeted by the Kentron Empire for the building of an advance base to expand the Empire into other subsectors. It is not known if Kentron has been placing any meson guns on any of the moons of Esgalduin or not, but it is suspected. Additionally, there are reports of activity in the Feanor system. However, few ships have occasion to venture into that system, so these are only rumors. This may be why Kentron might be building a base here away from prying eyes. Still some experts agree that the distance of Feanor from Eru negates the benefits of having a base on a Feanor planet.



## System Data for Sixth /Kentron (1318) Far Companion Number 2

	G0-V	Tertiary at 1000 AU
-		
0	Y680000-0	
0	3	Y400000-0
0	4	Y370000-0
0	5	Y270000-0
0	7	Y350000-0
0	9	Y210000-0
1	Y000000-0	Planetoid Belt
2	Y000000-0	Planetoid Belt
3		Large GG
3	2	Ring
3	3	Ring
3	4	Y665000-0
3	9	Y766000-0
3	11	Y864000-0
3	13	Y567000-0
4		Large GG
4	1	Ring
4	2	Ring
4	3	YS00000-0
4	6	YS00000-0
4	8	Y100000-0
4	9	Y481000-0
4	10	Y272000-0
5		Small GG
5	1	Ring
5	2	Ring
5	3	Ring
5	9	YS00000-0
5	65	Y665000-0
11		Dwarf A Quadary

See main system notes.

"The vacuum of interstellar space is cold, unforgiving, and uncaring. An ill-maintained ship is eventually going to misjump; that's not a reward or punishment, but a consequence for a chosen action. The consequence for Novala's actions is war."

-Maxwell Von-Kentron's declaration of war 247-15

## The Subsector as of 15

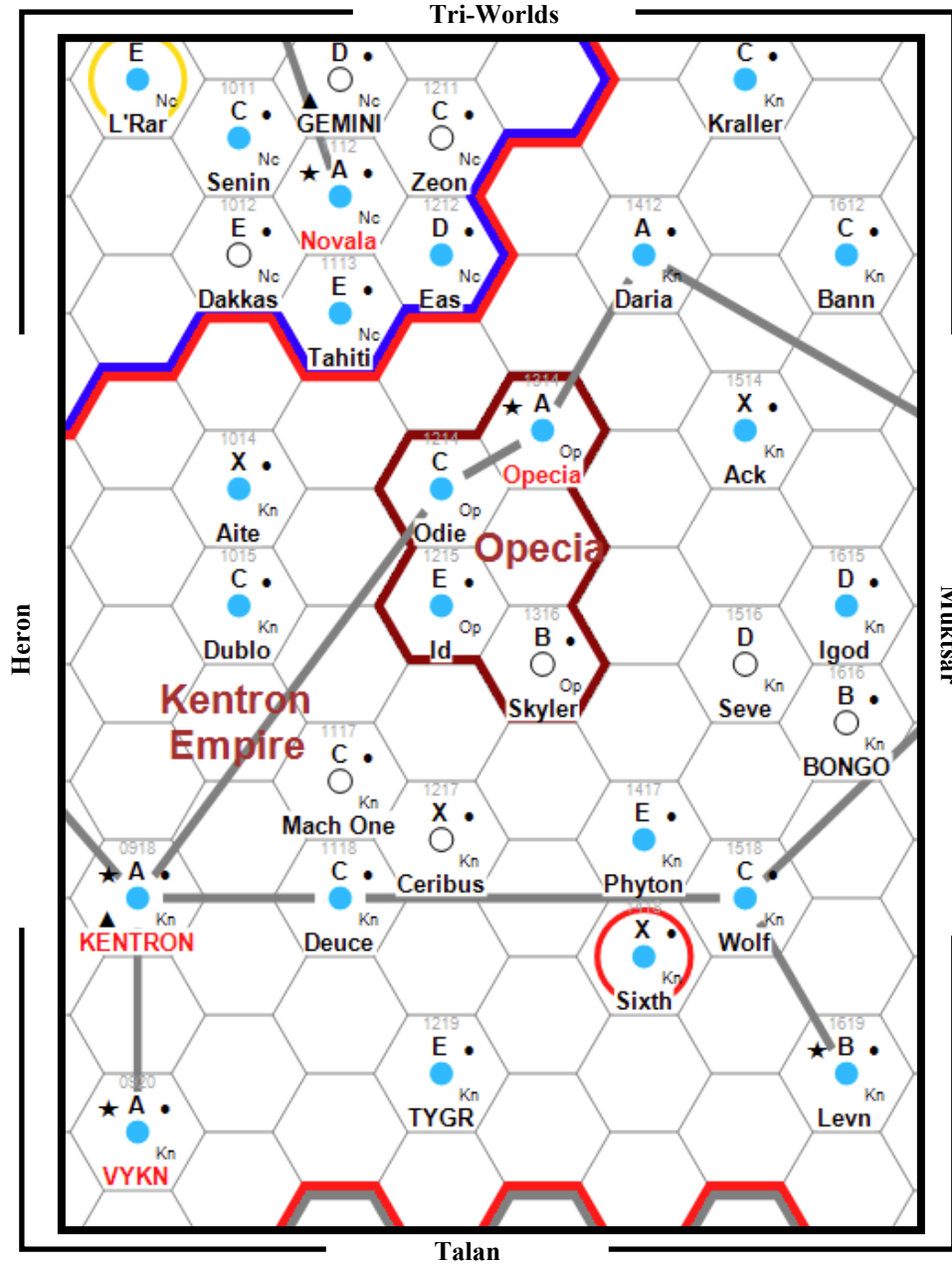
Hex	Name	UWP	B	Remarks	PBG {Ix}	(Ex)	[Cx]	N	Z	Al
0911	L'Rar	E361852-8		Ph Ri	610 +0	A874	D19A	e	A	Na
0918	Kentron	A4479A7-D		Hi Ag In Cp Sa	502 +5	A9D5	987B	F		Kn
0920	Vykn	A564945-9	N	Hi Ag Pr Ri Cp	211 +6	79E5	9978	E		Kn
1011	Senin	C875884-8		Ph Pa Ag Pi In Sa	312 +4	78C5	8775	F		Nv
1012	Dakkas	E6B059C-5		He Ni	302 -2	6519	5065	B		Nv
1014	Aite	X48569D-0		Ni Ag Ri	723 +0	7619	6061	C		Na
1015	Dublo	C56448C-5		Ni Pa Ag Ri	622 +2	7419	4066	C		Na
1111	Gemini	D210A24-B		Hi Na In Sa	334 +2	6AA5	A578	F		Na
1112	Novala	A688687-C	N	Ni Ag Ri Cp Sa	412 +4	6619	616D	F		Nv
1113	Tahiti	E869665-2		Ni Ri Sa	201 -1	6619	6062	B		Nv
1117	Mach One	C100688-7		Va Ni Na	322 +0	7619	6068	B		Kn
1118	Deuce	C531333-5		Po Sa	412 -1	7375	3273	B		Kn
1211	Zeon	C300889-7		Va Ph Na Pi In	111 +2	78A5	8575	F		Na
1212	Eas	D332544-4		Ni Po Sa	505 -2	6519	5064	B		Na
1214	Odie	C548564-5		Ni Ag	700 +0	5519	5066	B		Op
1215	Id	E865265-7		Ga Lo Ag Ri Sa	323 +1	7205	2475	C		Op
1217	Ceribus	E690416-1		De He Ni	702 -2	6419	4063	B		Na
1219	Tygr	E573AAE-5		Hi In Sa	302 +0	6A85	A374	F		Na
1314	Opecia	A797757-A	N	Ag Pi Cp	800 +4	57C5	777A	F		Op
1316	Skyler	B8B5564-8		Fl Ni Sa	711 +1	7519	5069	B		Op
1412	Daria	C456424-8		Ni Pa Ag	101 +4	6419	416A	B		Na
1417	Phyton	E758210-7		Lo Ag	702 +0	6205	2375	B		Na
1418	Sixth	X965000-0		Ba Ag Ri Sa	059 +0	6005	0370	C	R	Na
1511	Kraller	C78588A-7		Ga Ph Pa Ag Ri	601 +2	68A5	8574	e		Na
1514	Ack	E553454-0		Ni Po	502 -2	6419	4060	B		Na
1516	Seve	E240234-3		De Lo Po	900 -2	5205	2171	B		Na
1518	Wolf	C592565-5		He Ni Sa	402 -1	6519	5066	B		Na
1612	Bann	D431262-9		Lo Po Sa	123 +0	7205	2376	B		Na
1615	Igod	D324533-7		Ni Sa	414 -1	7519	068	B		Na
1616	Bongo	C500956-9		Hi Na Va Sa	711 +3	99C4	AC6E	E		Na
1619	Levn	B7646DA-A	N	Ni Ag Ri Cp	801 +4	6619	616A	C		Lv

The Kentron Subsector consists of 31 systems. The highest Tech level is 13 at Kentron (0918) the largest populations are at Gemini and Tygr with both over 30 billion people each. The capital for the Kentron Empire is at Kentron (0918). The Corporate Office for Novala Enterprises is located on Novala (1112). The Capital of the Opecian Empire is Opecia(1314)



# Kentron Subsector as of 65

# System Data for Sixth /Kentron (1318) Far Companion Number 1



-		Dwarf K	Secondary at 60000 Au
0		Y000000-0	Planetoid Belt
1		Small GG	
1	2	Ring	
1	3	Ring	
1	7	YS00000-0	
1	8	Y200000-0	
1	10	Y375000-0	
1	45	YS00000-0	
2		Large GG	
2	6	Y163000-0	
2	7	Y473000-0	
2	9	Y170000-0	
2	40	Y599000-0	
2	65	Y350000-0	
2		Large GG	
3	1	Ring	
3	2	Ring	
3	12	YS00000-0	
3	40	Y247000-0	
3	50	Y58A000-0	
4		Large GG	
4	3	Ring	
4	8	Y456000-0	
4	9	YS00000-0	
4	13	Y230000-0	
4	55	Y131000-0	
4	60	Y160000-0	
5		Large GG	
5	4	Y463000-0	
5	6	Y453000-0	
5	8	Y364000-0	
5	9	Y394000-0	
5	20	Y6A2000-0	
5	40	Y789000-0	
5	50	Y210000-0	
6		Large GG	
6	1	Ring	
6	2	Ring	
6	3	Ring	
6	6	Y465000-0	
6	7	Y536000-0	
6	8	Y335000-0	
6	11	Y466000-0	
6	15	Y4A0000-0	
6	30	Y354000-0	
6	40	Y343000-0	
6	50	Y152000-0	

See main system notes

## System Data for Sixth /Kentron (1318) Primary

	Sixth	F5-V	Primary
2		Y000000-0	Planetoid Belt
3		Small GG	
3	2	Ring	
3	4	X965000-0	
3	10	YS00000-0	
3	45	Y340000-0	
4		Y000000-0	
6		Y479000-0	
7		Y4A0000-0	
7	8	YR00000-0	
7	9	YS00000-0	
7	11	Y234000-0	
8		Y9B8000-0	
8	1	Ring	
8	5	Y300000-0	
8	8	Y446000-0	
8	12	Y345000-0	
9		YAB3000-0	
9	1	Ring	
9	2	Ring	
9	3	Ring	
9	5	Y8A7000-0	
9	6	Y7A5000-0	
9	7	Y8D2000-0	
9	8	Y588000-0	
9	45	Y9F4000-0	

The Sixth system is deep in Kentron territory. With its large number of gas giants and far companions this system is rich in resources and value. The Talani Empire knew of this value and had it quarantined to preserve its use by members of the Imperial court. Kentron was quick to seize this system when the Talani fleet was called home. Von-Kentron is making plans for this system and has setup satellites to interdict it. The information presented here was gathered during the brief period between Talani and Kentron control of the system and should not be considered accurate or up to date.

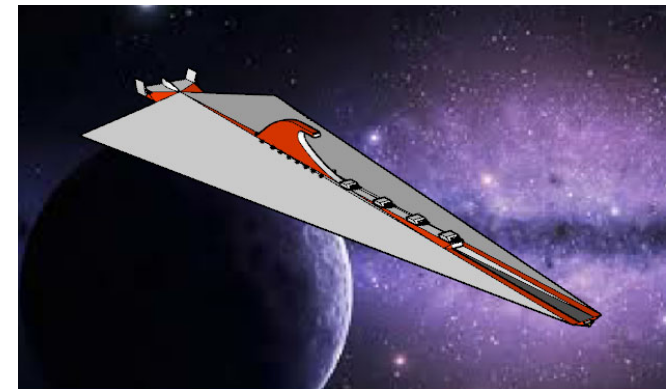
**"There is no profit in war, only loss."**

-Stephan Abdullah Prevans

## The Subsector as of 65

Hex	Name	UWP	B	Notes	PBG	Ix	Ex	Cx	N	Z	AL
0911	L'Rar	E361852-8		Ph Ri	610	+0	A874	D19A	e	A	Nc
0918	Kentron	A4479A7-E	NS	Hi Ag In Cp Sa	502	+5	A9D5	987B	F		Kn
0920	Vykn	A564945-B	N	Hi Ag Pr Ri Cp	211	+6	79E5	9978	E		Kn
1011	Senin	C875884-8		Ph Pa Ag Pi In Sa	312	+4	78C5	8775	F		Nc
1012	Dakkas	E6B059C-5		He Ni	302	-2	6519	5065	B		Nc
1014	Aite	X48569D-1		Ni Ag Ri	723	+0	7619	6061	C		Kn
1015	Dublo	C56448C-6		Ni Pa Ag Ri	622	+2	7419	4066	C		Kn
1111	Gemini	D210A24-B	S	Hi Na In Sa	334	+2	6AA5	A578	F		Nc
1112	Novala	A688687-D	N	Ni Ag Ri Cp Sa	412	+4	6619	616D	F		Nc
1113	Tahiti	E869665-2		Ni Ri Sa	201	-1	6619	6062	B		Nc
1117	Mach One	C100688-8		Va Ni Na	322	+0	7619	6068	B		Kn
1118	Deuce	C531333-6		Po Sa	412	-1	7375	3273	B		Kn
1211	Zeon	C300889-8		Va Ph Na Pi In	111	+2	78A5	8575	F		Nc
1212	Eas	D332544-4		Ni Po Sa	505	-2	6519	5064	B		Nc
1214	Odie	C548564-6		Ni Ag	700	+0	5519	5066	B		Op
1215	Id	E865265-8		Ga Lo Ag Ri Sa	323	+1	7205	2475	C		Op
1217	Ceribus	X690416-3		De He Ni	702	-2	6419	4063	B		Kn
1219	Tygr	E573AAE-7		Hi In Sa	302	+0	6A85	A374	F		Kn
1314	Opecia	A797757-D	N	Ag Pi Cp	800	+4	57C5	777A	F		Op
1316	Skyler	B8B5564-9		Fl Ni Sa	711	+1	7519	5069	B		Op
1412	Daria	A456424-A		Ni Pa Ag	101	+4	6419	416A	B		Kn
1417	Phyton	E758210-8		Lo Ag	702	+0	6205	2375	B		Kn
1418	Sixth	X965000-0		Ba Ag Ri Sa	059	+0	6005	0370	C	R	Kn
1511	Kraller	C78588A-7		Ga Ph Pa Ag Ri	601	+2	68A5	8574	e		Kn
1514	Ack	X553454-0		Ni Po	502	-2	6419	4060	B		Kn
1516	Seve	D240234-4		De Lo Po	900	-2	5205	2171	B		Kn
1518	Wolf	C592565-6		He Ni Sa	402	-1	6519	5066	B		Kn
1612	Bann	C431262-9		Lo Po Sa	123	+0	7205	2376	B		Kn
1615	Igod	D324533-8		Ni Sa	414	-1	7519	[068	B		Kn
1616	Bongo	B500956-A		Hi Na Va Sa	711	+3	99C4	AC6E	E		Kn
1619	Levn	B7646DA-A	N	Ni Ag Ri	801	+4	6619	616A	C		Kn

The Kentron subsector contains 31 worlds and has a population of 75.7 billion. The highest technology level is 14 on Kentron. The largest populations are approximately 30 billion on the planets Gemini and Tygr. The most important world is Vykn. The Kentron Empire Alliance capitals are on Kentron, Opecia, and Vykn. There are no sophont home worlds in the subsector.



### System Data for L'Rar/Kentron (0911):

-		F1 V	Primary
0	Maude	YS00000-0	
1	Sister	YS00000-0	
2	Wolfric	Y520000-0	
3	Kriegbaum	Y210000-0	
4	Turnitsa	H507124-7	Va Ic Lo
4	10 Malave'	Y100000-0	
5	L'Rar	E361852-8	Ri
6		Y000000-0	

The L'Rar system serves as a gateway to the Heron Subsector for Novalan merchants. Taking this system will deprive the Novalan systems of vital trade with its ally the Heron Empire.

### System Data For Kentron/Kentron (0918)

-	Vertex	M8 V	Primary
0	KC	Small GG	
0	1	Ring	
0	6 Kentron	A4478A7-E N	
0	8 Kathron	F500565-D	Va Na Ni
1	LC	Large GG	
1	2	Ring	
1	3 Lima	F300165-E N	Va Lo Ni
1	4 Origin	Y330000-0	
1	5 Chord	Y300000-0	
1	6 Loma	G521268-D	Po Ni
1	12 Luma	G300268-D	Ni
1	13 Skew	Y300000-0	
1	25 Directerix	Y100000-0	
1	35 Point	Y300000-0	
1	40 Luma Point	H100000-0	
1	50 Ellispse	Y755000-0	
1	65 Apex	Y400000-0	

The Kentron system is perhaps the best defended system in the subsector. There are meson gun sites on all of the major planets. Marines on each of the populated planets and deep underground shelters for the population in case of attack. The moons of KC are well within the 100-diameter jump limit of Vertex and thus receive plenty of warning of invading fleets.

### System Data for Daria/Kentron (1412):

-	Sandra	G2 V	Primary
1	Robin	Y300000-0	
2	Peggy	Y431000-0	
3	Daria	A456424-A	N Ni
3	7 Mary	F266365-9	Ni
3	15 Vicky	F100000-0	
4	Dochia	Large GG	
4	2	Ring	
4	3	Ring	
4	6 Kristi	F755466-A	N Ni
4	9 Paula	Y603000-0	
4	15 Bonnie	YS00000-0	
4	25 Natalie	F832269-A	R Ni

There are many squadrons defending Dochia from invading fleets as well as strong planetary defense bases on Kristi and Daria. It is rumored that the Research facility on Natalie is a prototype weapons facility used to test new and exotic weapons for the Kentron Empire.

### System Data for Phytan/Kentron (1417):

-	Arboc	G5 VI	Primary
0	Relt'tar	Y340000-0	
1	Phytan	E758210-8	Lo Ni
1	2	Ring	
1	7 Rep'puc	Y261110-7	Ni
2	Daeh	Small GG	
2	3	Ring	
2	7 Retaw'adit	Y543000-0	
2	65 Petsowt	YS03000-0	
3		Small GG	
3	8 Rebmit	Y88A000-0	Ice Planet
3	11 K'calb	Y531000-0	
4	Nedrag	YS04000-0	

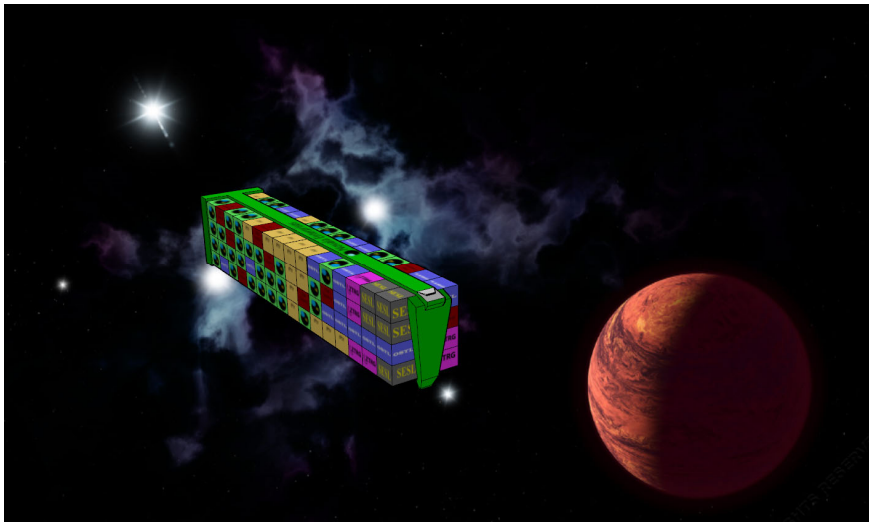
Phytan is another underdeveloped system that has little significance. There are no defenses and very little traffic in or out of the system.

### System Data for Skyler/Kentron (1316):

-	Charlie	M4 VI	Primary
3	Shoe	Large GG	
3	1	Ring	
3	2	Ring	
3	3	Ring	
3	4	Ring	
3	5	Ring	
3	7 Skyler	B8B5364-9	Fl Ni
3	10 Dagwood	Y477000-0	
3	25 Calvin	Y400000-0	
4	Hobbes Belt	Y000000-0	

This is one of the few well-defended non-home world systems in the subsector. The main world of Skyler orbits the only gas giant in the system. From here the defenders can harass any fleet attempting to setup a base in the system. It is rumored that Kentron meson guns were placed on Skyler to make taking the system a deadly affair. Thus any invader will have to take and hold the planet Skyler to use this system as a base.

This system was the sight of the first inconclusive battle between the forces of Kentron and Opecia. It was here that Kentron was able to capture one of the Opecian tanker ships, and initiate operation Sugar Cube.



### System Data for Vykn/Kentron (0920):

0	Big Red	F0-V	Primary
1	William	Y410000-0	
1	4 Pinky	Y100000-0	
1	8 Claudious	YS00000-0	
2	Spooky	F570363-7	Po
2	4 Kramer	YS00000-0	
2	7 Aeowyn	Y410000-0	
3	Mischief	Y200238-7	Va
4	Lechat	F200165-7	Va
5	Vykn	A564945-B	N Hi Shipyard
5	1	YR00000-0	
5	7 Jeffry	F266765-7	Ag Ri
5	8 Domino	G300547-7	Va
6	Ouija	Large GG	
6	6 Trottings	Y371000-0	
6	7 Manteo	G360235-7	Dw Ni
6	8 Dee-Dee	F665166-8	N Ni
6	10 Pepsi	G7B0235-7	Ni
6	30 Fluffy	Y4A0000-0	
6	45 Bumper	F300146-7	Va Ni
6	50 Scoop	Y400000-0	
6	55 Sid	Y886000-0	
12	Hershey	DM	Secondary
15		Y000000-0	Planetoid Belt
16	Spot	Y6C0000-0	
16	5 Utopia	G554268-7	Ni

This system is easily defended from attack by the strategic placement of bases on Vykn and Dee-Dee. The base on Dee-Dee protects the gas giant Ouija from attack and prevents enemy fleets from refueling un-harassed. The only weak spot is the planet Utopia. Utopia is far from the rest of the system and it can easily provide a defensible outpost for an invading fleet. From here an invasion force can setup and collect intelligence on the system while a fleet jumps to the inner system. Once there, the fleet can receive the intel from the outpost, and operate at an advantage.

**“Flipper! Flipper! Flipper! Flipper! ...”**

88<sup>th</sup> Opecian Colonial Marines Battle Chant

### System Data for Senin/Kentron (1011):

-	Bishop	M2 V	Primary
0	Cardinal	Small GG	
0	25 Vicar	G135563-7	Ni
0	50 Senin	C875884-8	Ri
1	Padre	Small GG	
1	1	Ring	
1	10 Acolyte	Y100000-0	
1	40 Priest	Y540000-0	
2	Halo	Y000000-0	

Novalan Enterprises is building a new class B starport on the planet Senin. They are also taking steps to increase the tech level of the system. This investment will create a strong base of operations for the corporation. However, the system still remains open to attack. Still there are a few defensive bases on Senin itself ensuring the gas giant Cardinal, is somewhat protected from invading fleets. However, Padre is wide open to infiltration and can be used as a base of operations against the inner system or against any of the nearby systems, to include Novala itself.

### System Data for Dakkas/Kentron (1012):

-	Kopen	G3V	Primary
0	Sack	Y100000-0	
1	Orphanage	Y510000-0	
2	Peasant	Y100000-0	
3	Temple	H779236-6	Ni
4	Castle	Small GG	
4	3 Footman	Y300000-0	
4	15 Pikeman	H886225-7	Ni
4	40 Chakaal	Y500000-0	
5	Stable	Small GG	
5	1	Ring	
5	3	Ring	
5	10 Knight	Y644000-0	
5	55 Cavalry	Y200000-0	
6	Dakkas	E6B0596-7	De Ni Lanthanum
7	Gate	Y500000-0	

The Dakkas system is ripe for the taking. Shortly after the fall of the Talani Empire the people of Dakkas overthrew the Pikeman provincial governor, and then took control of the system itself. However, their control of the system is tenuous at best. The people of Pikeman are very unhappy with the Novalan imposed government and would likely support an invading fleet in its bid to control the system.

### System Data for Tygr/Kentron (1219):

-	Poo	G1 V	Primary
Close	Piglet	DM	Secondary
1	Rabbit	Y200000-0	
2	Gopher	Y401000-0	
3	Owl	Y200000-0	
4	Eeore	Large GG	
4	1	Ring	
4	2	Ring	
4	4 Tygr	E573AAE-7	Hi In
4	7 Christopher	H65546A-6	Ni
4	20 Robin	H37586A-6	
4	30 Windsday	Y347000-0	
4	40 Honey	Y102000-0	
5	Mother	Large GG	
5	4 Bounce	YS00000-0	
5	6 Hephalent	Y100000-0	
5	7 Hole	Y532000-0	
5	9 Mickey	YS00000-0	

This Backwater system is of little tactical importance. However, its large population has profited well under the Kentron flag. Its population readily provides the Kentron Empire the one thing it needs most, personnel and tax money. In the long run, next to the Kentron system, the loss of the Tygr system could cripple the Kentron Empire.

### System Data for Opecia/Kentron (1314):

-	Ieihuc	M5 V	Primary
0	Opecia	A797757-D	N Ag
0	6 IaYard	Y224000-0	
1	Yard'K	Y140000-0	

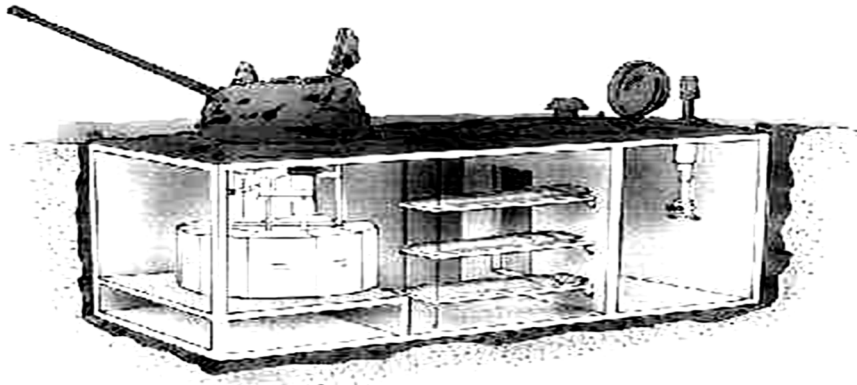
The Opecia system has made great use of the alliance with Kentron. In just 50 years they have raised their technology level to 13 from 10. This system is very important strategically due to its close proximity to Novalan space. Also fleets attacking this system can not exit jump space close to the planet as the 100-diameter limit for Ieihuc is far beyond the orbit of Opecia. Aided by the lack of a gas giant the system does not provide a good outpost to launch attacks from for either inner system or extra system targets.



### System Data for Ceribus/Kentron (1217):

-	Stark	M4 V	Primary
0	Ceribus	X690416-3	De Ni
1	Splinter	Large GG	
1	4 Leonardo	Y200000-0	
1	5 Michelangelo	Y705000-0	
1	6 Donatelo	Y200000-0	
1	7 Rafael	Y514000-0	
1	10 April	Y301000-0	
1	11 Casey	Y502000-0	
1	20 Shredder	Y200000-0	
1	40 Stockman	Y210000-0	
1	45 Eastman	YS03000-0	
1	50 Laird	Y500000-0	
1	175 Honeycut	Y647000-0	
2	Usagi	Small GG	
2	1	Ring	
2	8 Harlock	YS00000-0	
2	10 Rodey	Y222000-0	
3	Parker	Y402000-0	
3	1	Ring	

This System is not well defended and can be used as a staging point for taking either the Deuce or Mach One systems. Each of those systems can in turn be used to stage an attack on the Kentron system. Or if the attacking fleet is jump 3 capable then this system can be used to take the Kentron system directly.



### System Data for Aite/Kentron (1014):

-	Mayor	M1V	Primary
0	Aite	X485690-1	Ag Ri
1		Y000000-0	
2	Coiffeur	Small GG	
3	King	Large GG	
3	3	Ring	
3	6 Baron	Y300000-0	
3	8 Duke	Y200000-0	
3	10 Count	Y506000-0	
4	Regent	Large GG	
4	8 Councilman	Y300000-0	
4	9 Sheriff	Y100000-0	
4	11 Judge	Y625000-0	
5		Y000000-0	

The Aite System provides several obstacles to defense. First the planet Coiffeur can provide any fleet a fairly safe refueling point. However, it will be difficult to maintain control of as it has no large orbital bodies from which to build a base. On the other hand, the planet Regent does provide this and at this time the government of Kentron is working to build a new base on one of the orbital bodies of that planet.

### System Data for Dublo/Kentron (1015):

-	Dublo	G7V	Primary
1		Y000000-0	
2	Dudley	C56448C-6	Ni
2	3	Ring	
3		Y000000-0	
4	Oliver	Large GG	
4	1	Ring	
4	2	Ring	
4	27 Evans	Y625000-0	
5	Pritchard	Small GG	
5	2	Ring	
5	10 Horner	Y743000-0	
5	15 Simpson	Y321000-0	
7.5	Farmer	Y442000-0	

The Dublo system serves as a communications hub for the Kentron Empire. Take it and the Kentron Empire will have to send messages through another less efficient route. Despite the importance of this system to the Kentron Empire, it has yet to set up adequate defenses. The two gas giants, Oliver and Pritchard can be easily taken. However, control of both of these gas giants must be maintained by the invading fleet to achieve the desired effect. If Kentron controls either of the gas giants, then it can still use the system as a communications hub.

### System Data for Gemini/Kentron (1111):

-	Zeus	K0V	Primary
0	Aquarius	Y200000-0	
1	Pisces	YS00000-0	
2	Aries	F668434-9	Ni
3	Taurus	Small GG	
3	9 Gemini	D210A24-A	Hi Na In Po Dw
4	Cancer	Large GG	
4	5 Leo	Y638000-0	
4	6 Virgo	Y614000-0	
4	7 Libra	Y200000-0	
4	8 Scorpio	F746124-9	Ni
4	10 Sagittarius	Y506000-0	
4	11 Capricorn	Y644000-0	
4	25 Terra	G504166-9	Ni Va
4	30 Alantia	Y200000-0	
4	45 Athena	Y100000-0	
5	Cassiopeia	Small GG	
5	1	Ring	
10	Apollo	DM9	Secondary
0	Perseus	Large GG	
0	1	Ring	
0	3	Ring	
0	5 Cygnus	YS00000-0	
0	8 Canis	Y100000-0	
0	20 Lepus	Y355000-0	
1	Castor	Small GG	
1	1	Ring	
1	2	Ring	
1	3	Ring	
1	5 Pollux	YS00000-0	
2	Cetus	Y523000-0	
3		Y000000-0	
4		Y000000-0	
5		Y000000-0	

The Combination of high tech and high population makes this system a vital asset to Novalan Enterprises both as a trade center and as a source of high tech troops and naval personnel. The gas giants Taurus and Cancer are well defended. The local government of Gemini is building bases to defend Perseus and Castor as well. This leaves only Cassiopeia to be defended by several large System Defense boats

### System Data for Odie/Kentron (1214):

-	Odie	K2 VI	Primary
0	Odie-I	C548564-6	Ag Ni
0	8 Odie-II	Y393262-5	Ni
2	Odie-III	YS00000-0	
8	Odie-IV	Dwarf M	Secondary

Odie is a backwater system, it's only importance is its location near Novalan Space and the capital of the Opecian Empire (Opecia 1314). The lack of a gas giant and any reachable fuel outside of Odie's Jump limit prevents this system from being of any importance.

### System Data for ID/Kentron (1215):

-	ZidrYads	F6 VI	Primary
3	Theak	Large GG	
3	5	Ring	
3	7 ID	E865265-7	Lo Ni
3	11 Iky	Y500000-0	
4	YrnZac	Large GG	
4	6 YrnZac-I	Y400000-0	
4	7 YrnZac-II	Y392000-0	
4	9 YrnZac-III	Y7D3000-0	
4	10 YrnZac-IV	Y100000-0	
4	11 YrnZac-V	Y200000-0	
4	25 YrnZac-VI	H466000-0	
4	35 YrnZac-VII	Y351000-0	
4	40 YrnZac-VIII	Y331000-0	
4	45 YrnZac-IX	Y454000-0	
4	150 YrnZac-X	Y678000-0	
5	Lad'ra	Small GG	
5	1	Ring	
5	8 Lad'ra-I	Y4B0000-0	
5	20 Lad'ra-II	YS00000-0	
5	30 Lad'ra-III	Y252000-0	
5	60 Lad'ra-IV	Y574000-0	
6		Y000000-0	
7		Y000000-0	

The Kentron Empire is working to improve the starport facilities on ID. This is partly due to the influx of colonists from Tygr and Vykn. This system is not yet well defended and open to attack. There is definite activity on the surface of YrnZac-VI. It is believed that the Kentron Empire may be building a new naval base here. Additionally, the Kentron Military is apparently using the planet Lad'ra-I as an intermittent training base. This system can be used as a staging area for attacks on Mach One or Ceribus.

## System Data for Eas/Kentron (1212):

-	Aster	M5 VI	Primary
0	Bonset	Large GG	
0	1	Ring	
0	10	Nightshade Y614000-0	
0	11	Goldenrod Y200000-0	
0	30	Thistle YS00000-0	
0	45	Yarrow Y509000-0	
1	Mullein	Large GG	
1	7	Tansy Y445000-0	
1	8	Clover YS00000-0	
1	9	Eas D332544-4	Ni Po
1	10	Baneberry Y508000-0	
1	12	Figwort Y434000-0	
1	15	Radish Y301000-0	
1	20	Lily Y301000-0	
1	45	Lupine Y519000-0	Lanthanum Deposits
2	Maple	Small GG	
2	2	Ring	
2	4	Acorn S000000-0	
9	Dandy Lion	DM	Secondary
0	Berry	Small GG	
1	Oak	Small GG	
1	1	Ring	
1	5	Cherry YS00000-0	
1	12	Almond Y201000-0	
1	25	Persimmon Y100000-0	
1	30	Pistachio Y204000-0	

Eas is also a good system to use as a jumping off point to attack the Novala home system. It is not well defended and the Novalans have yet to realize the importance of this system in that matter. Interestingly, there are also large Lanthanum deposits on Lupine that the Novalans have yet to exploit.

**"You will not win the war by dying for the empire. You will win it by making the other poor dumb son of a bloodvark die for his."**

- Jonathan 'Flipper' Hornback

## System Data for Novala/Kentron (1112)

-	Novala	F0-V	Primary
0	Novala-I	Y100000-0	
0	30	Novala-I-A YS00000-0	
0	35	Novala-I-B YS00000-0	
0	45	Novala-I-C YS00000-0	
1	Novala-II	FS00125-B	Va Ni
2	Novala-III	YS00000-0	
3	Novala-IV	F650269-C	N Ni De
4	Novala-V	F000369-C	N Belt, Shipyard
5	Novala-VI	Large GG	
5	4	Novala-VI-A YS00000-0	
5	5	Novala-VI-B F414269-C	Ni
5	6	Novala-VI-C Y100000-0	
5	7	Novala-VI-D YS00000-0	
5	8	Novala Prime A688687-C	N AG Ni Ri Shipyard
5	9	Novala-VI-E F547569-B	AG Ni
5	10	Novala-VI-F F310369-B	De Ni
5	13	Novala-VI-G YS00000-0	
6	Novala-VII	Small GG	
6	4	Novala-VII-A F556569-B	Ag Ni
6	6	Novala-VII-B F264469-B	Ni
6	10	Novala-VII-C F310269-C	De Ni
7	Novala-VIII	Y532000-0	

The Novala system was the site of the final battle in the First Kentron war. Just as the combined Kentron/Opecia fleets arrived, CEO Prevans agreed to the first Novala/Heron pact. Combining their fleets the Novalan and the Heron fleets managed to force the Kentron/Opecia fleets to a stalemate. As both sides realized the futility of their situation they agreed to a cease-fire. Later the cease-fire became a treaty and the war ended.

This system is now better defended. The alliance with the Heron Empire has given the Novalans access too much needed military experience and hardware. The meson gun sites on all the populated worlds will make getting near the gas giants very dangerous. Also assaulting any of the moons orbiting the gas giants will be extremely dangerous as each moon can support the defense of the others nearby.

### System Data for Tahiti/Kentron (1113):

-	Aruba	DB	Primary
0	Guam	Small GG	
0	1	Ring	
0	5 Tahiti	C869665-A N Ni Ri	
0	7 Puerto Rico	F765464-A R Ni	
0	8 Tinian	HS00000-0	

This system is relatively unimportant except that Novalan Enterprises has built a research facility on Puerto Rico. This facility is used to test new drive and defensive systems to protect the Novalan merchant ships. It is also rumored to be carrying out tests on new weapons, possibly including psionic weapons. Additionally, the naval base on Tahiti is used as a repair facility and an R&R stop for the Novalan naval units. It is well defended and includes some deep meson gun emplacements. The taking of this system will require taking Tahiti but the presence of the Research facility on Puerto Rico and its potential threat to an invading fleet should not be discounted.

### System Data For Mach One/Kentron (1117)

-	Mach One	F5-V	Primary
0	MO-I	C100688-7	Na Ni Va
1	MO-II	Y000000-0	
2	MO-III	Y000000-0	
3	MO-IV	Large GG	
3	3 MO-IV-A	H300000-0	
3	4 MO-IV-B	Y720000-0	
3	5 MO-IV-C	Y200000-0	
3	6 MO-IV-D	Y44016A-7	De Ni
3	7 MO-IV-E	Y410000-0	
3	8 MO-IV-F	Y440000-0	
3	9 MO-IV-G	Y320000-0	
3	10 MO-IV-H	H640000-0	
3	55 MO-IV-I	Y40012A-7	Va Ni
4	MO-V	Small GG	
4	5 MO-V-A	H200000-0	
4	10 MO-V-B	Y20046A-7	Va Ni
4	35 MO-V-C	Y443000-0	

The Mach One system is moderately defended with Kentron system defense boats. It is rumored that at least one moon orbiting each of the gas giants has a deep meson gun site to harass any enemy fleet attempting to use the system as a launching point and reserve base to attack the Kentron home system.

### System Data for Deuce/Kentron (1118):

-	Deuce	M5 V	Primary
0	Deuce-I	Y000000-0	Planetoid Belt
1	Deuce-II	Large GG	
1	5 Deuce-II-A	H200000-0	
1	9 Deuce-II-B	Y442000-0	
1	10 Deuce-II-C	H230000-0	
1	11 Deuce-II-D	H200000-0	Deuce-III Small GG
2	5 Deuce-III-A	C531333-6	Lo Ni Po
2	10 Deuce-III-B	Y421000-0	
2	35 Deuce-III-C	Y320000-0	
5	Deuce-IV	Dwarf M5	Secondary

Deuce was the site of the final battle between Kentron and Opecia. At this battle, Kentron was able to force the Opecian fleet to turn back. Although the Opecian fleet greatly outnumbered the Kentron fleet, the Kentron fleet utilized its superior technology to great effect. As the Opecians were retreating, Von-Kentron sent them a message, "Join us and we will share our technology". This message was taken back to Opecia and the alliance was formed soon after. Deuce is an important system as it can be used as the jumping off point for an attack on the Kentron system. The government of Kentron is spending money to improve the defenses of this system to prevent this possibility

### System Data for Zeon/Kentron (1211):

-	Zeon	M1V	Primary
0	Zeon-I	C300889-8	Na Va
1		Y000000-0	
2	Zeon-II	Small GG	
2	3	Ring	

Zeon is a good launching point for attacking Novala. However the lack of a large body orbiting Zeon-II will complicate both the defense of the system and using the gas giant as a base of operation against the Novalan home world.

